

Summit Prairie, Grant County

Rusty Crayfish (*Orconectes rusticus*)

OISC October 15, 2019

Rick Boatner
Wildlife Division
Invasive Species Wildlife Integrity Supervisor



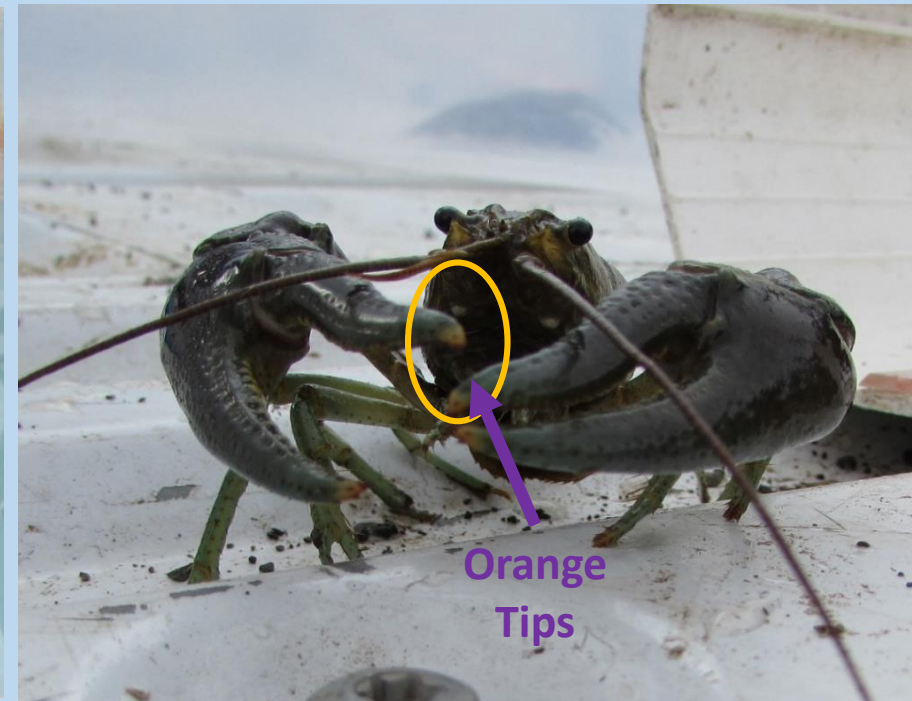
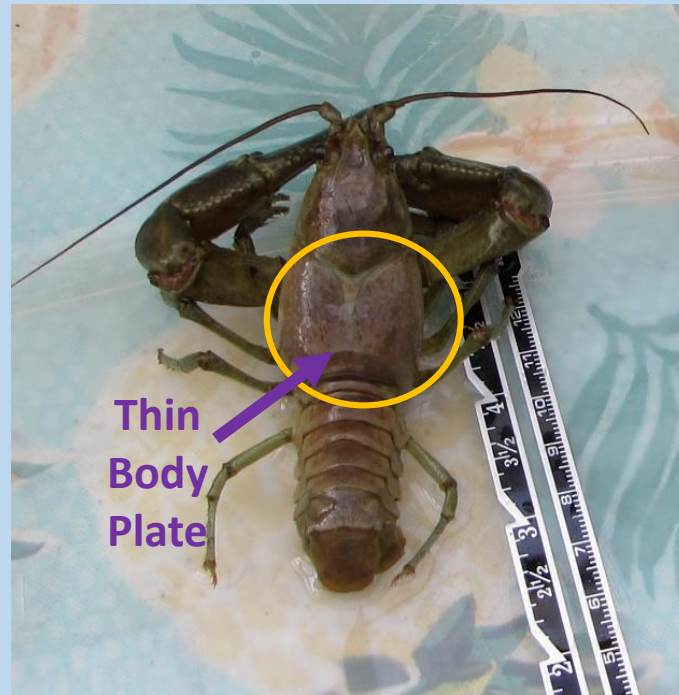
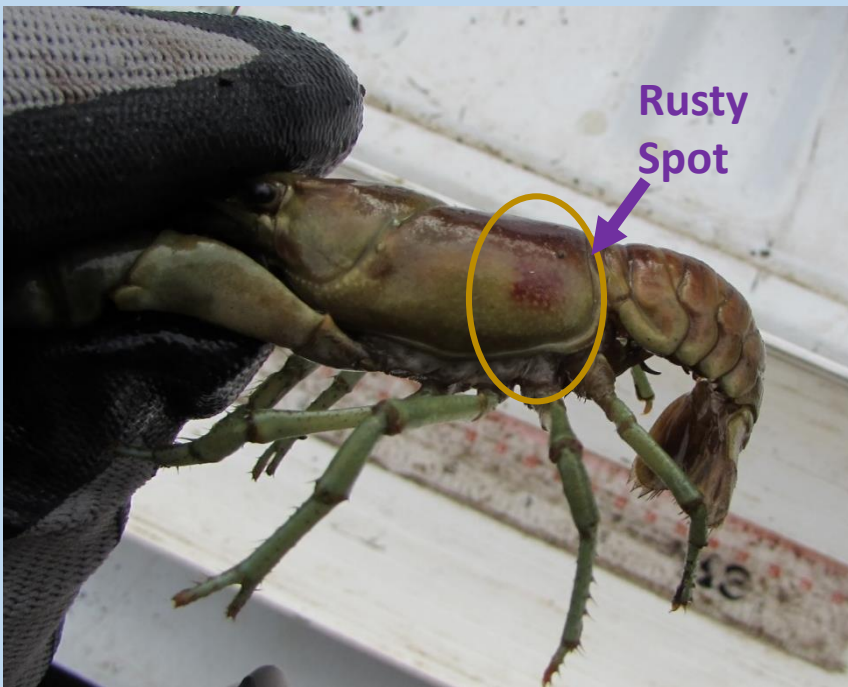
Summit Prairie, Grant County



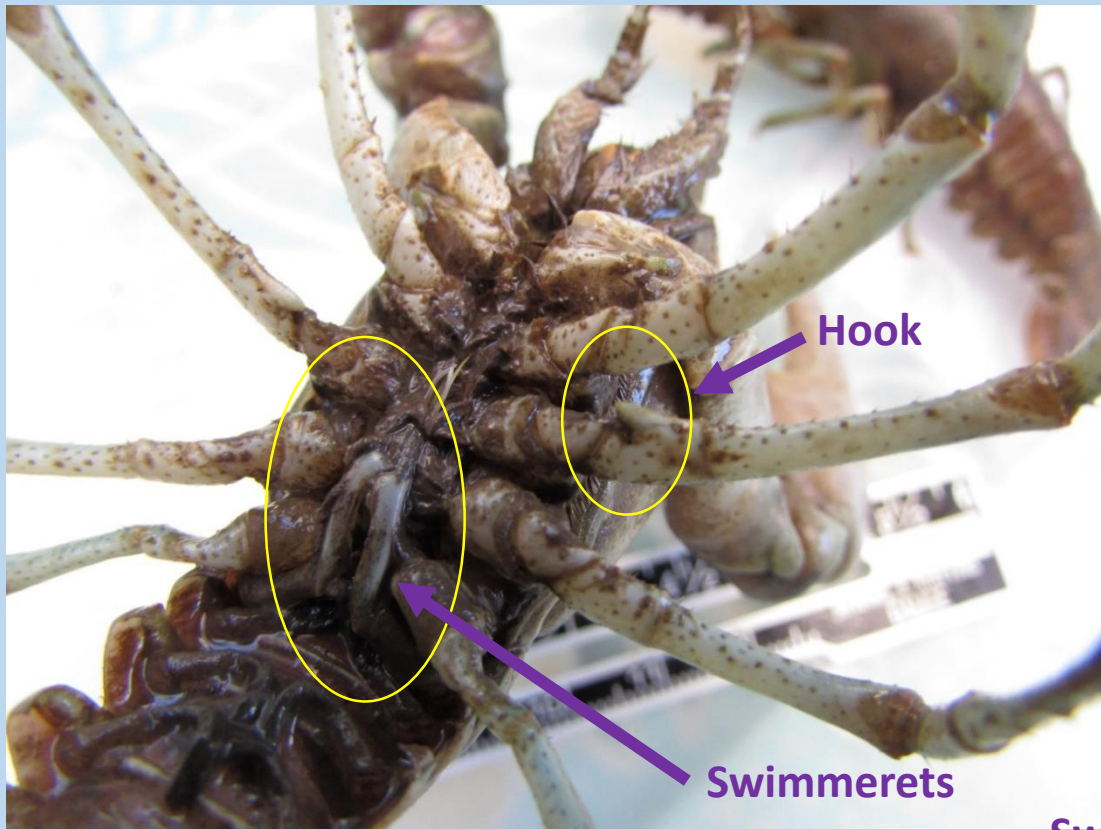
Summit Creek



Rusty Crayfish Identification



Distinguishing Sex



Male



Swimmerets
Not
Present



Female

Traps



Hand Capture (Seining)



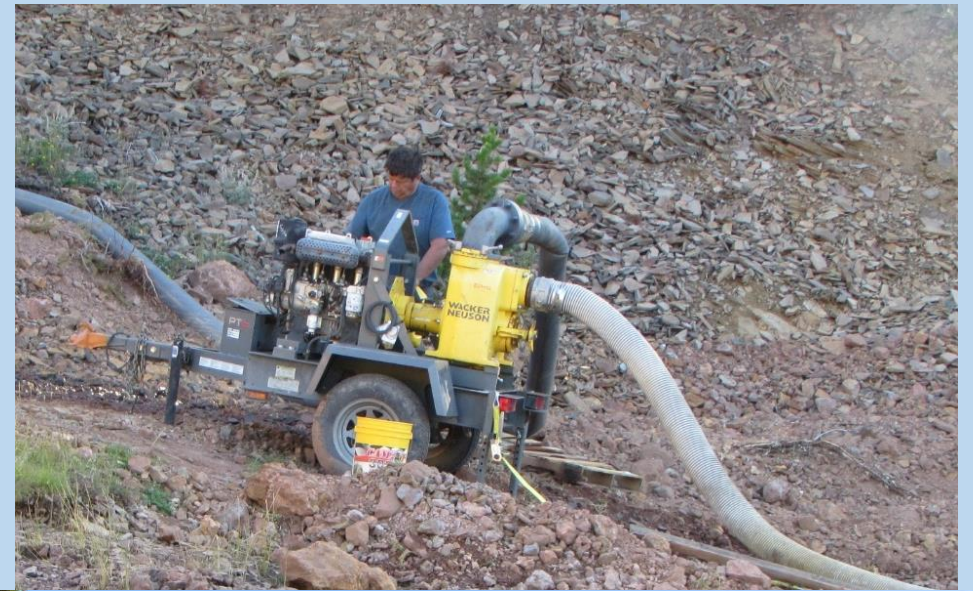
Trapping Results



Capture Method	Events	Trap Sets	Avg. Trap Soak Time	Range of Catch #/trap	Avg. Catch #/Trap	Total Take
Trapping Daylight Hours	5	79	2:14	0 -39	10.5	834
Trapping Nighttime Hours	4	50	11:46	0-49	14.9	743
Hand + Seine	4					1,273
Sediment Bag						571
Totals		129				3,421
Post Treatment Trapping	1	8	1:56	0	0	0
Post Treatment Shoreline	1					0



Draining and Treatment





Questions ?

