



**Oregon** Invasive Species  
Online Hotline



**iMapInvasives**

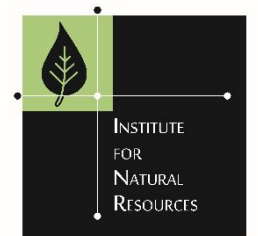
*Sharing information for strategic management*

# Oregon Invasive Species Hotline and iMapInvasives

---

UPDATE FOR THE OREGON INVASIVE SPECIES COUNCIL

FEBRUARY 2018



Prepared by Lindsey Wise, Institute for Natural Resources, Portland State University



**Portland State**  
UNIVERSITY

# Invasive Species Online Hotline

- ❑ Launched in April 2008 with Oregon Public Broadcasting for Silent Invasion campaign
- ❑ 1-800 # monitored by ODA, and an online map-based reporting system
- ❑ Easy way for the public to report invasive species sightings to those who manage them

# Invasive Species Online Hotline

- Website moved to Portland State University in 2011
- Site hosted by PSU Office of Information Technology
- Site administration by PSU Oregon Biodiversity Information Center
- Upgrades to online system in 2016 funded by Oregon Department of Forestry and USDA
- Mobile friendly (use device's browser)

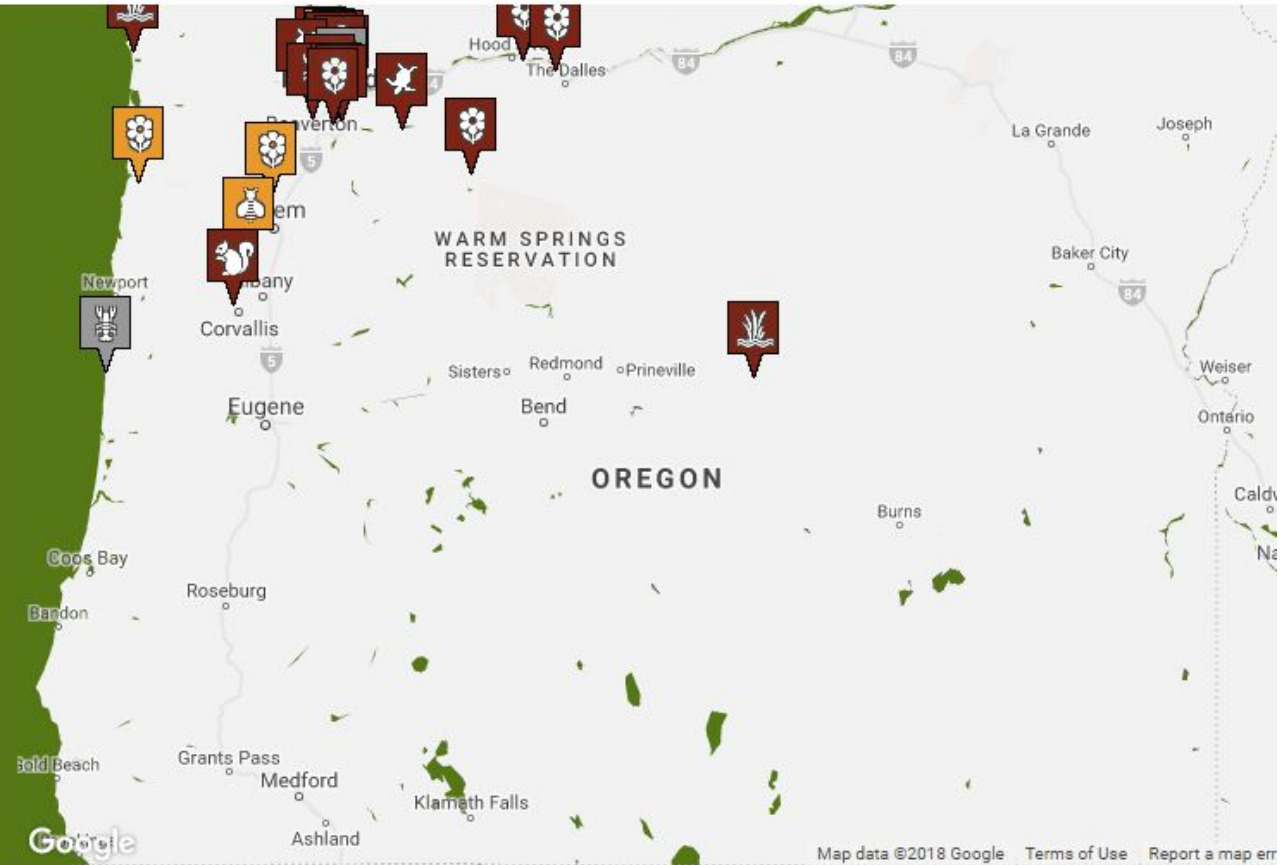


Have you seen something suspicious in your backyard or neighborhood? Are you having trouble identifying something you've found? Report potential invasive species you've found to the Online Hotline. Your submission will provide vital early detection information to the experts working to stop the next invasion before it starts!

[Report Now](#)

[Search Reports](#)

[About the Hotline](#) ↓



# Responsibilities of Hotline Managers

- Network of experts works on volunteer basis to review reports
- Sign up for e-mail alerts for your taxa and counties of interest
- “Claim” reports that match your criteria in a timely fashion
- Confirm ID of species if possible

# Responsibilities of Hotline Managers

- Reply to reporter with information on management, follow-up questions, or advice and thank them for their report
- Contact appropriate person or agency for response
- Assign follow-up action if applicable (e.g. treatment, monitoring)

# Responsibilities of Hotline Administrator

---

- Set up Hotline Manager accounts and onboard new managers
- Create and update training guides
- Manage species lists
- Migrate data from confirmed reports into iMapInvasives
- Work with PSU OIT to fix bugs and implement improvements
- Answer unclaimed reports as time and expertise allows

# Invasive Species Online Hotline Funding

- ❑ Minimum needed: \$2400 annual for PSU OIT hosting, security updates, required software patches
- ❑ Additional funds for administrator staff time as available, \$2-5k annually for basic upkeep
- ❑ 2017-2018 OIT funding provided by ODF
- ❑ 2017-2018 Hotline Administrator time covered by ODF and iMapInvasives subscribers





# Japanese Knotweed (*Fallopia japonica*) on Sep 9, 2017

## Description of specimen

There are two spots underneath the I-5 overpass that Japanese knotweed are flowering

*Submitter does not have a specimen*

**Submitted by:** Garry Bouffard (bouffardwa@gmail.com) 5415790425

**EDRR Status:** Local expert notified



## Location



On the McKenzie river underneath the I-5 overpass



## Expert Reviewer



**Tania Siemens**

WISE Program Coordinator (Watershed and Invasive Species Education)  
Oregon Sea Grant Extension

Oregon State University  
tania.siemens@oregonstate.edu  
541-914-0701

This report is already claimed

[Steal it!](#)

[Edit this report](#)

[Delete this Report \(will ask for confirmation first\)](#)

## Commentary

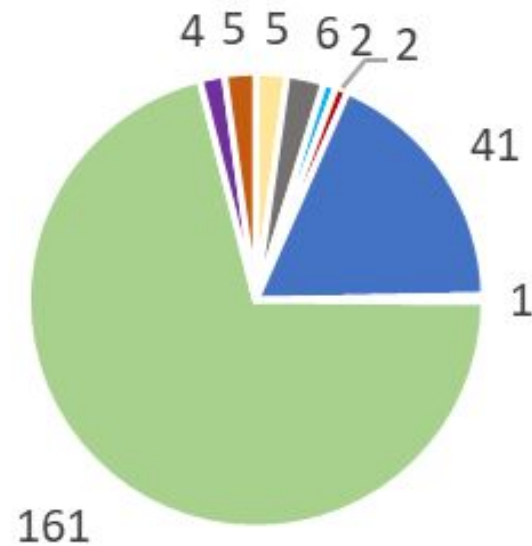
**TS**

Dear Garry,  
Thank you so much for submitting this knotweed report. Given it is in the riparian area of the river it is likely high priority for control. I will forward this on to local experts.  
Sincerely,

Tania Siemens  
Watershed and Invasive Species Education (WISE) Program  
Oregon Sea Grant

# 2017 Hotline Report Summary

Number of Reports by Category 2017



Aquatic Invertebrates

Aquatic Plants

Birds

Fish

Insects

Land Mollusks and Worms

Land Plants

Mammals

Reptiles and Amphibians

- 227 reports made
- 139 identifications confirmed
- 67 follow-up actions taken (e.g., local expert notified, surveyed, monitoring)

# 2017 Hotline Reports

- Many reports of:
  - American pokeweed
  - Garlic Mustard
  - Italian arum
  - Knotweeds
  - Lesser celandine
  - Tansy ragwort



Memorial Park, Wilsonville



Nails Creek, Cheshire

# 2017 Hotline Reports

- ❑ Giant Hogweed site in Portland
  - ❑ Cooperatively managed with property owners, renters, City of Portland and ODA
- ❑ Oblong Spurge in Salem
  - ❑ Followed up by ODA



# Oregon iMapInvasives

---

- ❑ Launched in 2011 by Oregon Invasive Species Council
- ❑ iMapInvasives was chosen after two years of surveying Oregon agencies, managers, and scientists
- ❑ Online, map-based invasive species database
- ❑ Site hosted by Florida State University
- ❑ Administered by Oregon Biodiversity Information Center at PSU
- ❑ iMapInvasives Network is a collaboration between many partners including NatureServe, New York Natural Heritage Program, Florida Natural Areas Inventory and others

# iMapInvasives Features

---

- Oregon's comprehensive invasive species database
- Online, publicly accessible
- Plants, vertebrate animals, invertebrate animals
- Terrestrial and aquatic
- Points and Polygons
- Observations, Surveys, and Treatments
- Flexible, easy to add new species
- Built-in queries and reporting tools
- Multiple user levels, from general distributions to detailed management records

# Oregon iMapInvasives Funding Model

- ❑ iMap License Agreement through PSU Research and Strategic Partnerships office
- ❑ Allows any partner to contribute what they can
- ❑ Allows protected data to be shared with federal agencies (licensed data is exempt from FOIA)
- ❑ Minimum: \$24,000 annually, through Cascade Pacific RC&D
  - Data administrator time at about 0.3 FTE
  - Annual \$5,000 fee to FSU for iMap hosting & maintenance

# Oregon iMapInvasives Funders FY2018



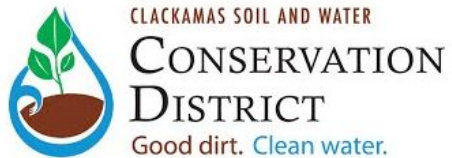
Cascade Pacific   
Resource Conservation + Development



WESTERN INVASIVES  
NETWORK



WEST MULTNOMAH  
Soil & Water Conservation District



CLACKAMAS SOIL AND WATER  
CONSERVATION  
DISTRICT  
Good dirt. Clean water.

CITY OF  
GRESHAM

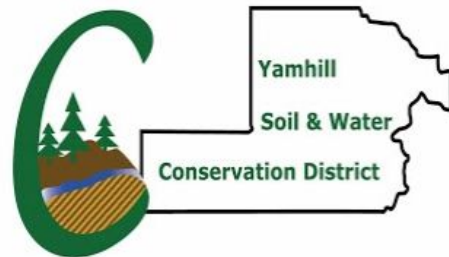


MARION COUNTY  
SOIL AND WATER  
CONSERVATION DISTRICT

BENTON  
SOIL AND WATER



CONSERVATION  
DISTRICT





Garlic Mustard

Zoom

Summary Data

Layers

Base Layers

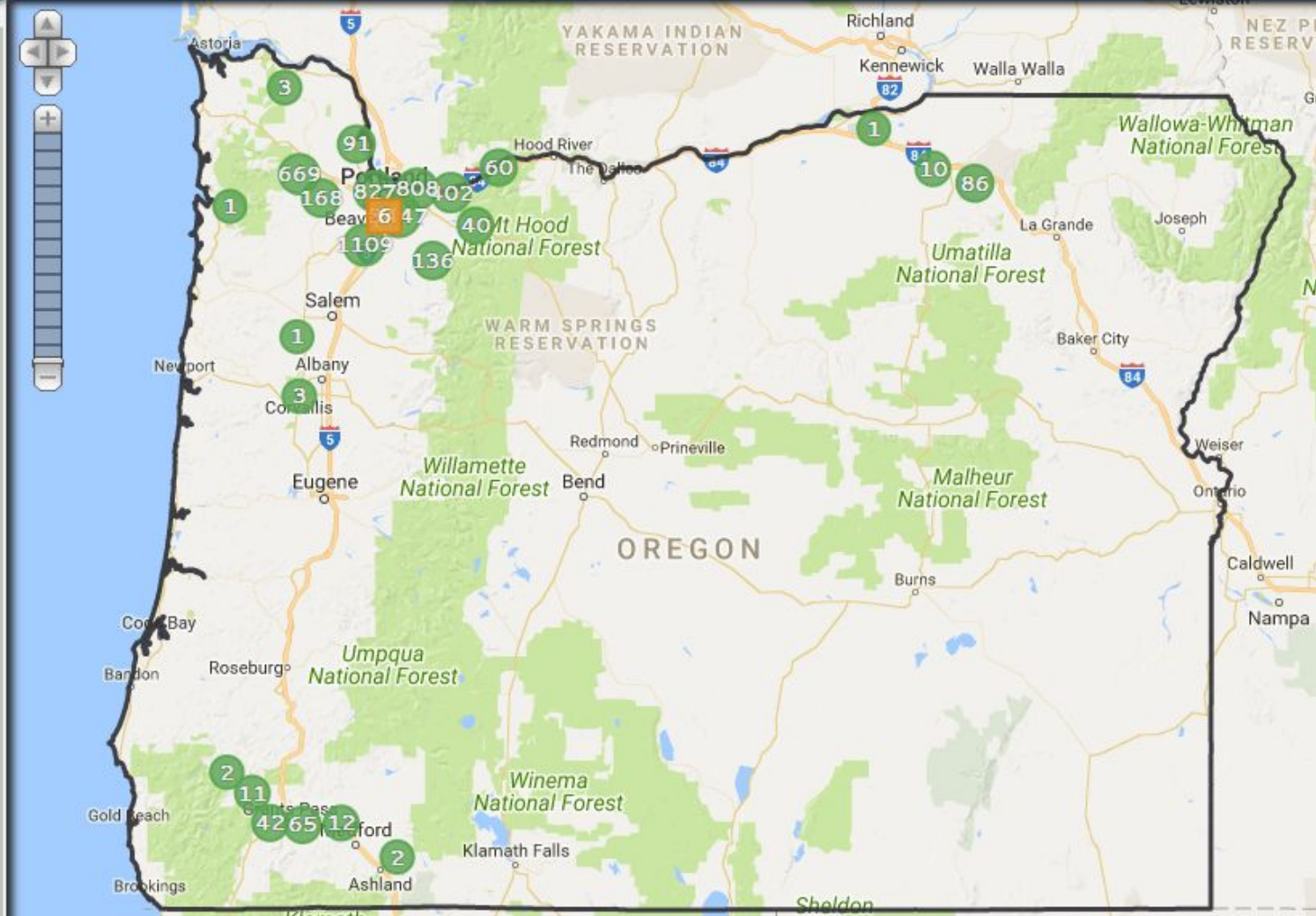
- Google Streets Layer
- Google Terrain Layer
- Google Hybrid Layer
- Google Aerials
- Bing AerialWithLabels
- Bing Aerial
- OpenStreet Maps
- No Base Layer

Overlays

Invasive Species Observations

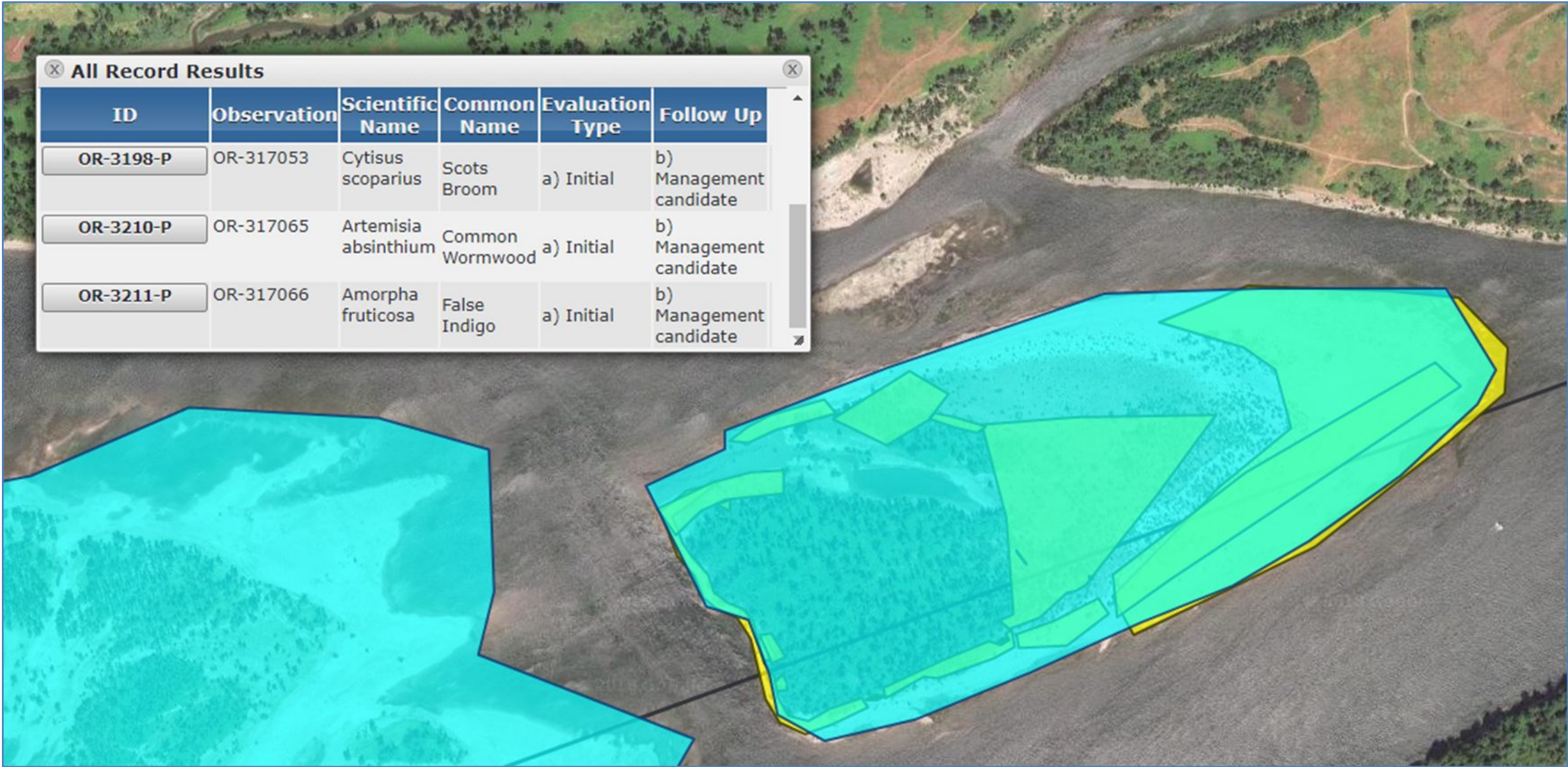
- Confirmed
- Unconfirmed
- Approximate

Map Overlay Layers

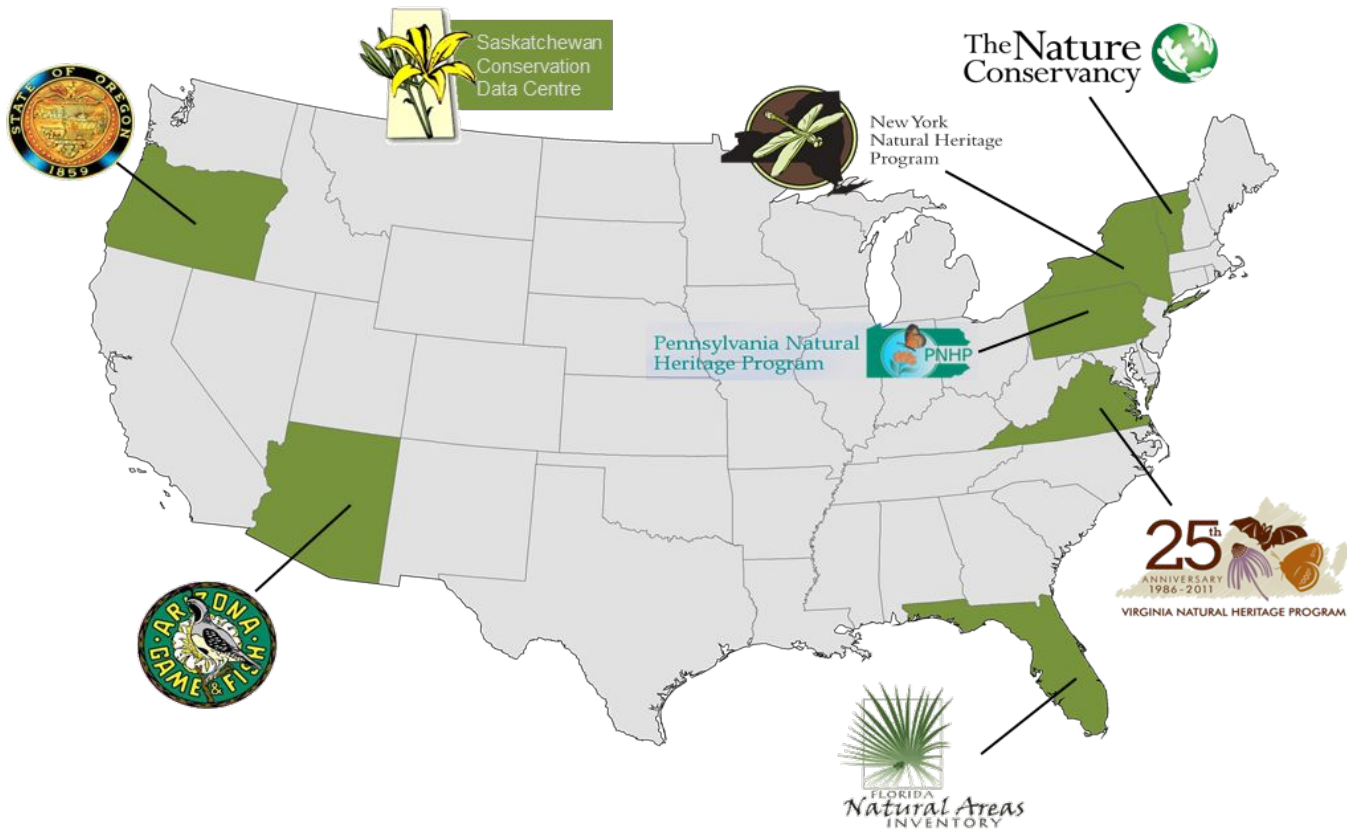


ⓧ All Record Results

ID	Observation	Scientific Name	Common Name	Evaluation Type	Follow Up
OR-3198-P	OR-317053	Cytisus scoparius	Scots Broom	a) Initial	b) Management candidate
OR-3210-P	OR-317065	Artemisia absinthium	Common Wormwood	a) Initial	b) Management candidate
OR-3211-P	OR-317066	Amorpha fruticosa	False Indigo	a) Initial	b) Management candidate



# Benefits of the iMapInvasives Network



- ❑ Improvements funded by one program are rolled out to all iMapInvasives programs
- ❑ Extremely collaborative network of administrators
- ❑ Shared media
- ❑ [iMapInvasives.org](http://iMapInvasives.org)

# iMapInvasives Network Happenings

- ❑ Stronger partnership with NatureServe
- ❑ NY Natural Heritage funding improvements planned for 2019
- ❑ Improve data viewing across boundaries
- ❑ Make it easier to import and export data
- ❑ Upgrade technology and infrastructure
- ❑ Improve mobile compatibility
- ❑ Etc.

# Use of iMapInvasives Data

---

The iMapInvasives dataset has been used to:

- Choose survey locations
- Prioritize management areas
- Map distributions
- Create predictive maps
- Create habitat assessments
- Prioritize restoration sites
- Assess habitat suitability
- Identify new invaders

## Use of iMapInvasives Data

---

- As Noxious/invasive weed contact for the county I am interested in EDRR species and observations.*
- We use iMap for screening, gathering aggregate data and then posting control actions.*
- iMap provides an opportunity to work on a shared platform, allowing for easy access in and out of our own data.*
- I am very interested in trends, finding thresholds/tipping points, and by using them, predicting impacts to ecosystems, management success rates, etc.*

# 2017 iMapInvasives Accomplishments

- ❑ Added over 50 new iMapInvasives users
- ❑ Added or updated 109,842 observation records for 263 species
- ❑ Added 4,526 assessment records (areas of infestation)
- ❑ Fulfilled data requests including:
  - ❑ Eagle Creek Fire recovery planning by USFS and partners
  - ❑ *Ventenata dubia* research at Oregon State University
  - ❑ Bull Run Watershed management

# 2017 iMapInvasives Online Reports

- ❑ Yellow floatingheart and Six petal primrose-willow from Benton SWCD
- ❑ Whitetop report from City of Portland



Willamette, south of Ingram Slough



Beggars Tick Wildlife Refuge



# Oregon's Invasives Data

## Hub

