

IDAHO

INVASIVE SPECIES COUNCIL



Idaho Invasive Species Council

- Executive Order No. 2017-05
Idaho Invasive Species Council
- Chaired by the Director of Idaho State Department of Agriculture
- The purpose of the Council is to foster coordinated approaches that support local initiatives for the prevention and control of invasive species
- Bi-annual meetings



The Office of the Governor

*Executive Department
State of Idaho*

**EXECUTIVE DEPARTMENT
STATE OF IDAHO
BOISE**

*State Capitol
Boise*

EXECUTIVE ORDER NO. 2017-05

**CONTINUING THE IDAHO INVASIVE SPECIES COUNCIL AND REPLACING EXECUTIVE ORDER
2010-14**

WHEREAS, the land, water and other resources of the State of Idaho are being severely impacted or threatened by the invasion of an increasing number of harmful, nonnative plant and animal species; and

WHEREAS, these impacts and potential infestations result in damage to Idaho's environment and causing economic hardships to public, private and tribal owners; and

WHEREAS, representatives of public and private organizations with an interest in controlling and preventing the spread of harmful invasive species to need a mechanism for facilitating cooperation, collaboration and development of statewide plans to this threat; and

WHEREAS, the Idaho Invasive Species Council serves as a mechanism for facilitating cooperation, collaboration and development of policy recommendations for statewide plans; and

WHEREAS, multiple agencies, authorities and information sources are used to implement a wide variety of invasive species management programs; and

WHEREAS, a need exists to build upon the strength of existing invasive species programs, to improve areas that are weaker and integrate efforts into an efficient unified state response to the threat of invasive species;

NOW THEREFORE, I, C.L. "BUTCH" OTTER, Governor of the State of Idaho, by the authority vested in me under the Constitution and laws of the State of Idaho do hereby order the following:

Idaho Invasive Species Strategic Plan 2017-2021

- Idaho Invasive Species Strategic Plan 2017-2021 “all taxa” Invasive Species Strategy focused upon three strategic “Goals”
 - Prevent the introduction of new invasive species to Idaho
 - Limit the spread of introduced invasive species in Idaho
 - Abate ecological and economic impacts that result from invasive species populations in Idaho



IISC Membership

Coordinated effort between private industry, local, tribal, state and federal governments as well as for-profit and not-for-profit private entities



IISC Membership

- A representative from the Governor's Office;
- The Director of the Department of Agriculture or his/her designee;
- The Director of the Department of Environmental Quality or his/her designee;
- The Director of the Department of Parks and Recreation or his/her designee;
- The Director of the Department of Fish and Game or his/her designee;
- The Director of the Department of Lands or his/her designee;
- The Director of the Department of Water Resources or his/her designee;
- The Director of the Department of Commerce or his/her designee;
- The Director of the Idaho Transportation Department or his/her designee;
- The Administrator of the Office of Species Conservation or his/her designee;
- A member of the Idaho State Senate;
- A member of the Idaho State House of Representatives;
- A representative from the Idaho Outfitters and Guides Association.



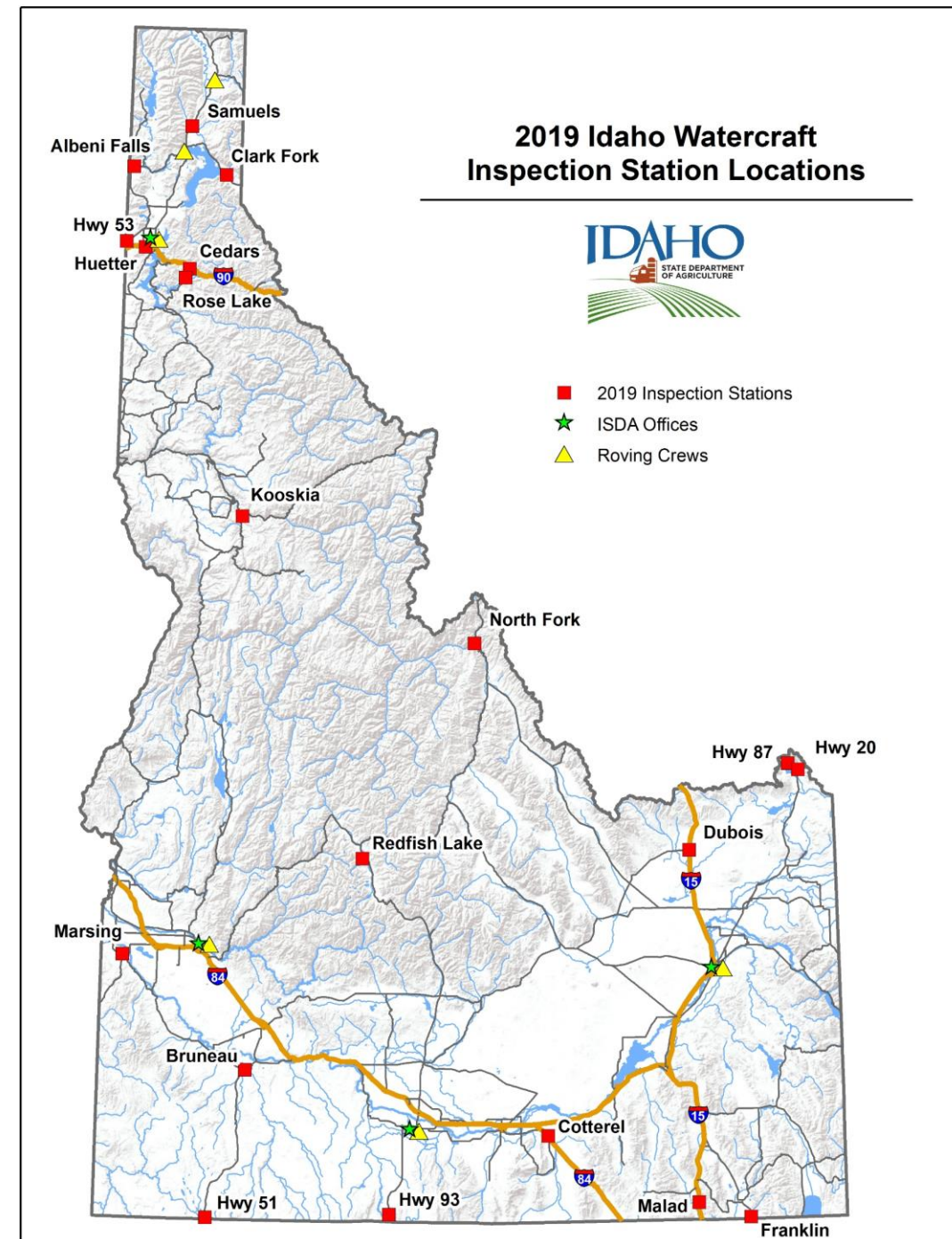
Invasive Species Program Areas

- Prevention
 - Watercraft Inspection
- Early Detection Monitoring
 - All tax aquatic and terrestrial
- Management and Control
 - Active control programs
 - Rapid response
- Education and Outreach
 - Public campaigns
 - Partnerships

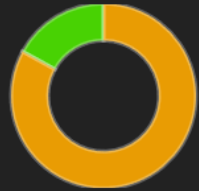


2019 Inspection Station

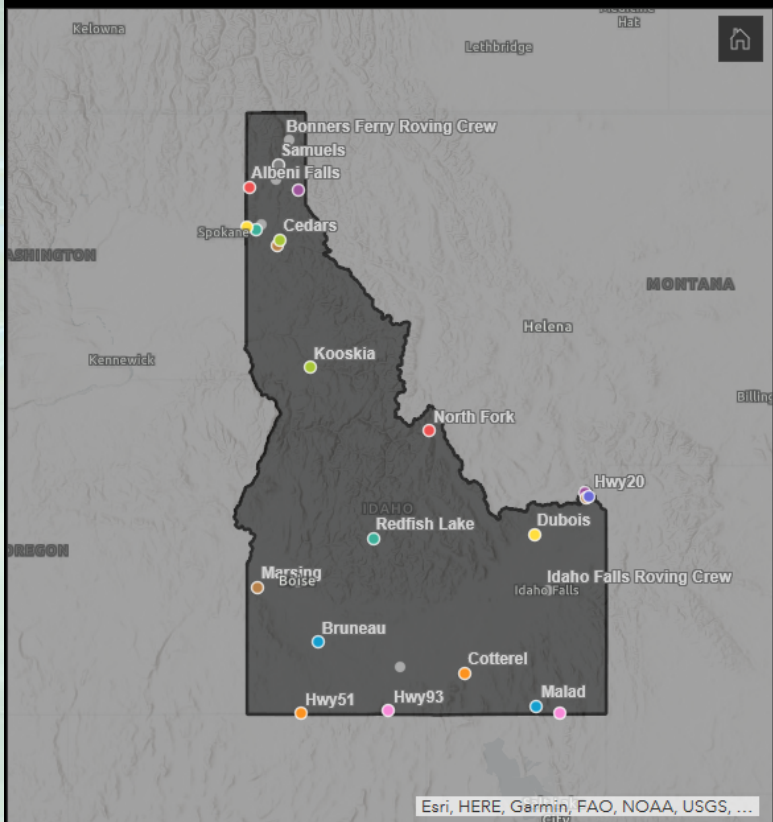
- **11th** Year of the inspection program
 - 110,000 in 2018, over 600,000 over 10 years
- **20** Inspection stations
 - 19 Cooperator stations
- **6** Roving inspection crews
- Extended season duration
- Extended night operations
 - 18 Hour (6AM-midnight)
 - Malad (I-15 N), Cedars (I-90W), Jackpot (HWY 93 N)
 - 24 Hour
 - Cotterell (I-84W)
- Law enforcement support
 - Local County
 - Idaho State Police



Plant Type Found on Watercraft



83% Aquatic Plant 17% Terrestrial Plant



Returned By The Law

2,126

From Infested Water

2,476

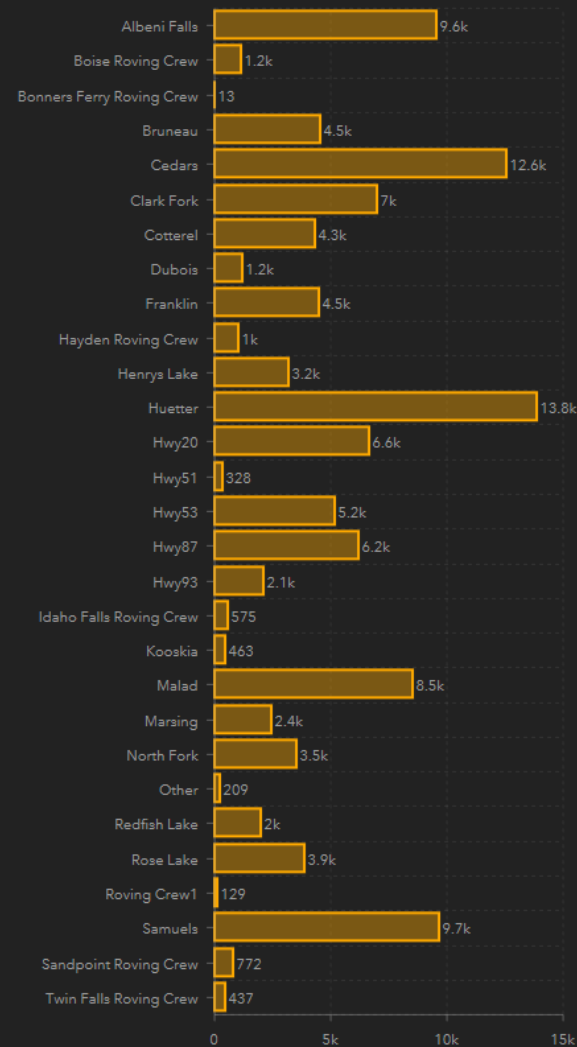
Total Hotwashed Watercraft

6,333

Total Watercraft Inspected

115,957

Inspections by Station



Inspections From Fouled Waters

- Inspection Station = Cedars
Date and Time = 9/24/2019, 6:46 PM
Watercraft Type = Fishing Boat
Days in Water = 725
Days out of Water = 0
Name of Waterbody = "MISSOURI RIVER" Missouri
Destination State = Washington
- Inspection Station = Cedars
Date and Time = 9/24/2019, 6:42 PM
Watercraft Type = Fishing Boat
Days in Water = 0
Days out of Water = 3,600
Name of Waterbody = NONE Minnesota
Destination State = Washington
- Inspection Station = Hwy93
Date and Time = 9/24/2019, 6:10 PM
Watercraft Type = Kayak
Days in Water = 1
Days out of Water = 36
Name of Waterbody = MEAD LAKE Nevada
Destination State = Washington
- Inspection Station = Cotterel
Date and Time = 9/24/2019, 1:31 PM
Watercraft Type = Jet Ski
Days in Water = 7
Days out of Water = 14
Name of Waterbody = POWELL LAKE Utah
Destination State = Idaho
- Inspection Station = Malad
Date and Time = 9/23/2019, 11:45 PM
Watercraft Type = Ski Boat
Days in Water = 4
Days out of Water = 1
Name of Waterbody = POWELL LAKE Utah
Destination State = Idaho
- Inspection Station = Hwy87
Date and Time = 9/23/2019, 6:04 PM
Watercraft Type = Inflatable Cataract
Days in Water = 1
Days out of Water = 0
Name of Waterbody = CANYON FERRY LAKE Montana
Destination State = Idaho
- Inspection Station = Cedars
Date and Time = 9/23/2019, 12:34 PM

2019 Early Detection Monitoring

- 10th year of monitoring in Idaho
- Veliger Monitoring (microscopy)
 - **1600** sample goal (2018- **1617** plankton samples collected from **80** waterbodies)
 - Multiple sample events, bi-weekly, per waterbody
 - Priority overnight shipment
 - 2 week turnaround for lab analysis
- Adult Monitoring (visual)
 - Reservoir drawdown, substrate and benthic grab sampling



K. Holzer



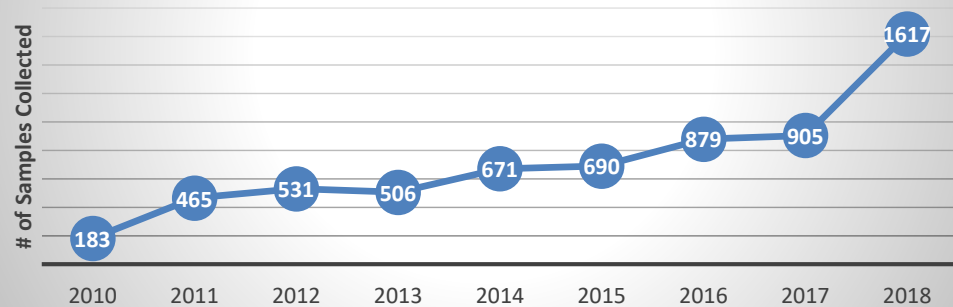
Idaho Waterways Survey
A Standard Operating Procedure for Aquatic Plants & Invasive Species



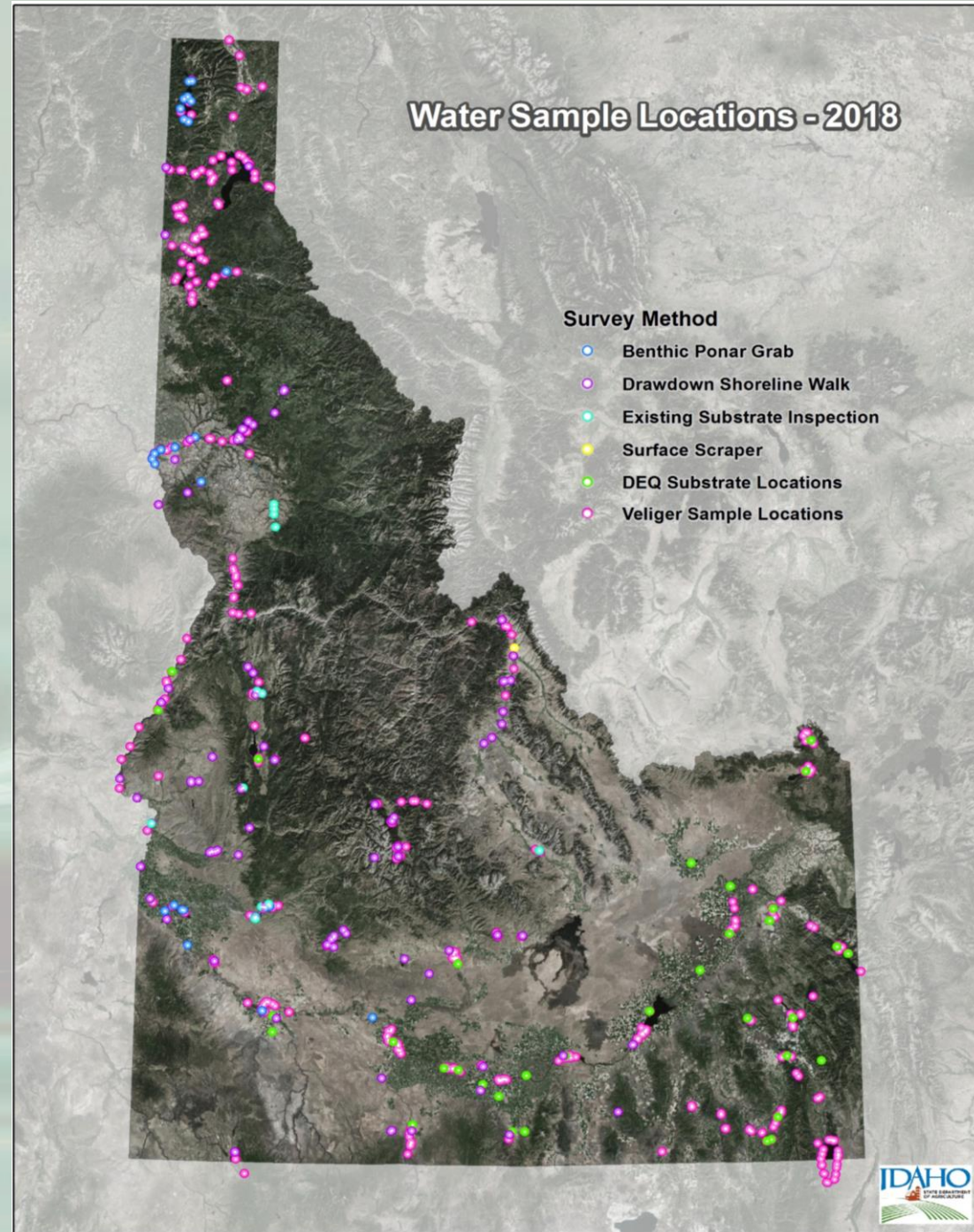
Early Detection Monitoring

- 2019 analysis ongoing
- No suspicious detections in Idaho
- Assistance from partners (Idaho Power, Tribes, Lemhi County & others)
- Survey for invasive plants, snails, clams, mussels, crayfish, etc.
- Activate Idaho rapid response plan if detection occurs

Plankton Tow Monitoring for Dreissenid Veliger Analysis ISDA 2009-2018

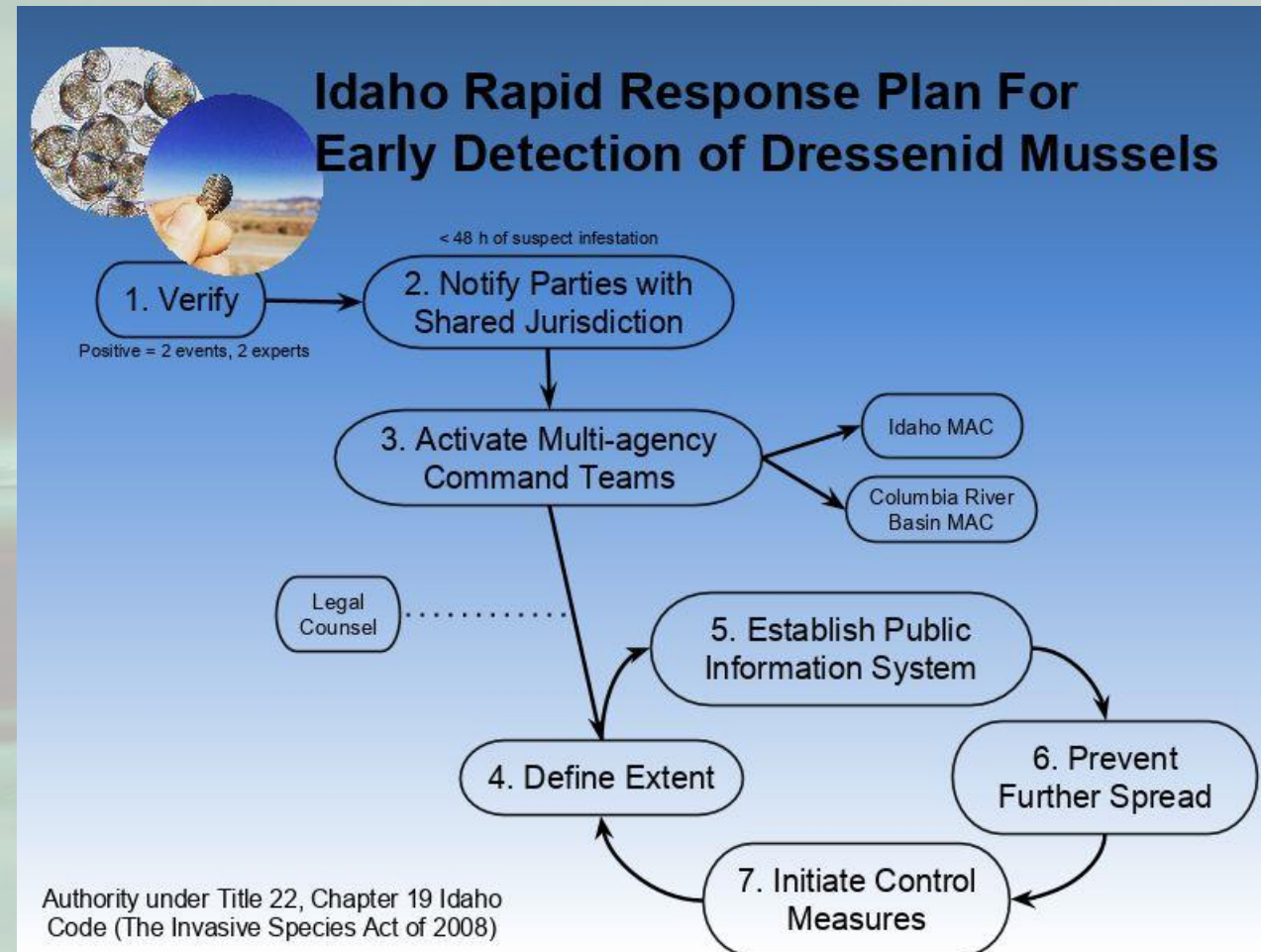


Water Sample Locations - 2018



Idaho Rapid Response

- Idaho Rapid Response Plan
 - Aligns with regional state plans
 - Aligns with Columbia River Basin Interagency Plan
 - Focuses on verification and communication
 - Learning from other states' experiences
- Rapid response exercise – May 2019
 - Hells Canyon Complex
 - Idaho Power Company partner
 - State of Oregon
 - Nez Perce Tribe
 - US Forest Service
 - Invasive Species Action Network (facilitator)
 - Pacific States Marine Fisheries Commission



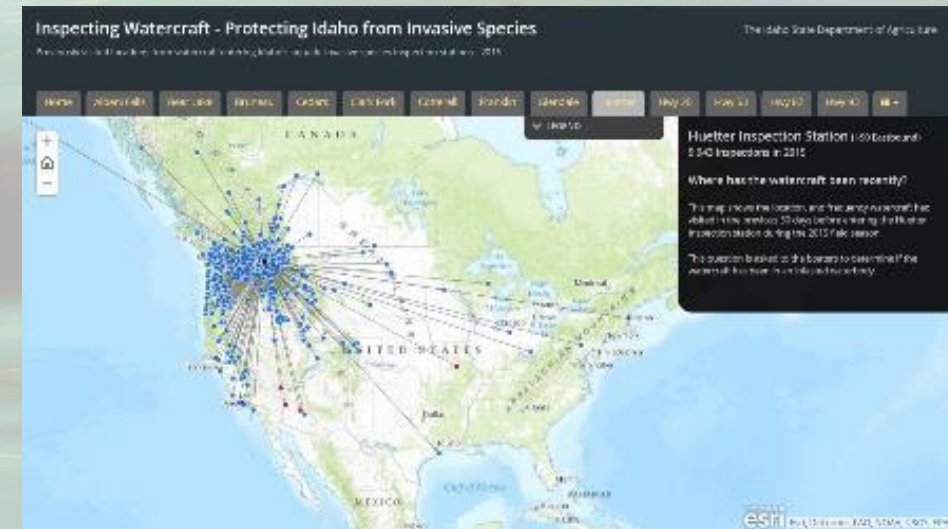
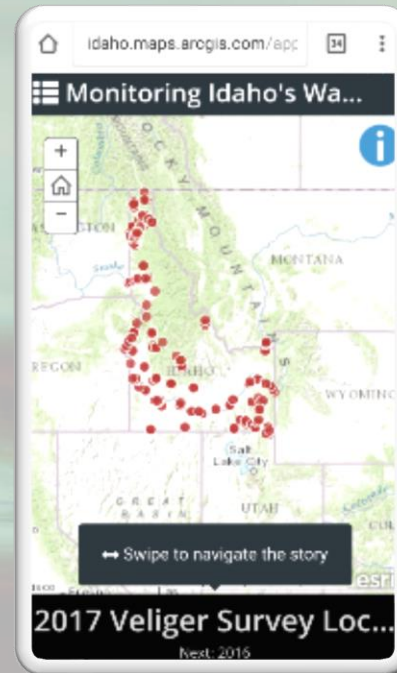
Education and Outreach

- Campaign
 - Clean, Drain, Dry
 - Know What you Grow
 - Don't Let it Loose
 - Knock it Off
 - Buy it where you burn it
- Various Pathways
 - Outreach events, seminars and workshops
 - Radio
 - Website
 - Facebook
 - Banner advertisement
 - Google advertisement
 - Promotional item, brochure, sticker, etc.
 - Watercraft registration flyer
 - Inspection stations
 - Cooperative partners





- Invasive Species & Noxious Weeds
- Watercraft Inspection
- Early Detection Monitoring
- Grasshopper & Mormon Cricket Control
- Noxious Weed Free Forage & Straw
- Forms, Reports, & Publications
- Maps
- FAQs
- Laws & Rules
- Contact Information



<http://invasivespecies.idaho.gov/idaho-invasive-species-council/>